

SASOL FOUNDATION

FIELD OFFICE
P.O. Box 85, Kitui, Kenya
Tel: 254 - 044 -22873.
Email: sasol@kenyaweb.com

LIASON OFFICE
P.O. Box 14333, Nairobi,
Tel: 254-02-860772 or 802171
muticon@wananchi.com.

29th September 2006

MINUTES OF THE SASOL BOARD MEETING HELD ON

22/9/2006 KITU PARKSIDE VILLA.

Present:

- Mr. F.M.Katua - Executive Board Chairman
- Prof. G-C.M. Mutiso
- Mr. Evans Ngava
- Ms. Eliza Mukua
- Ms. Pauline Mwalali
- Mr. S. Mutiso - Secretary

Absent with Apology

- Ms. Jemimah Sila

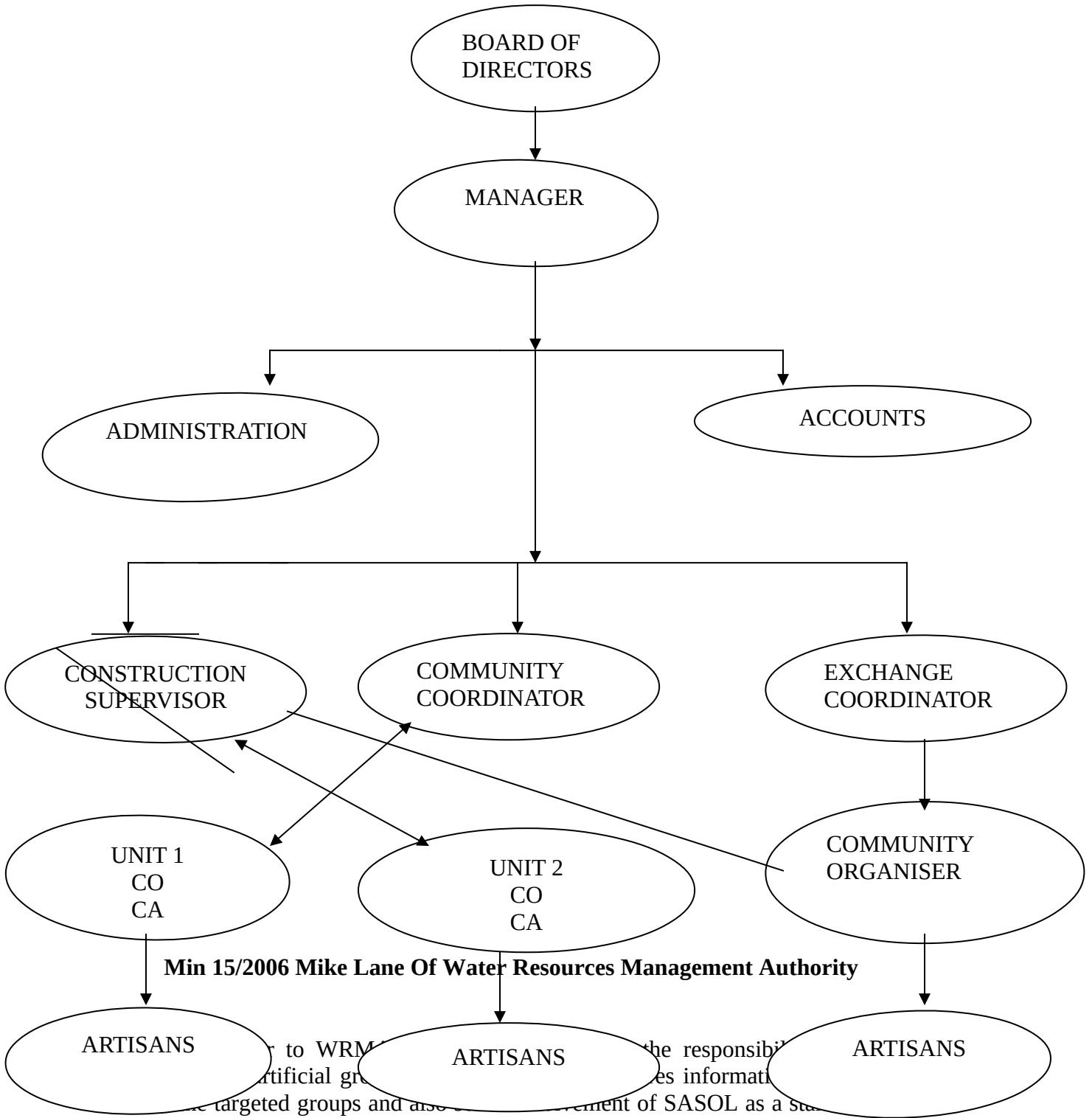
The meeting was called to order by Chairman at 11.25 am and was opened with prayers by E.Ngava.

The Chairman informed the members that this third Board meeting is usually a meeting with the staff. However before the staff arrived there were a few matters for discussion under AOB.

Min 14/2006 Proposed Organizational Structure

The new organizational structure was presented which proposes to create the divisions of the organization for ease of management and handling of personnel. Two are construction units while the third unit is for handling Exchange students. One of the construction units is based in Yatta to deal with the construction of 250 dams funded by MCC. The other unit will be based in Eastern Kitui anticipated to be funded by WSTF Contributions made by the members to the proposed structure have been included in the adapted format.

PROPOSED ORGANISATIONAL STRUCTURE



Min 15/2006 Mike Lane Of Water Resources Management Authority

to WRM... the responsibility... artificial groups... provides information... targeted groups and also... development of SASOL as a sta... guideline development.

The members felt that the relevant information and involvement is in order provided Mike is acting in the position at the WRMA. This needs a check out which would be possible on a face-to-face meeting.

Min 16/2006 Edukans

The Director of Exchange – Henk Haring visited SASOL together with the Director of Edukans Mr. Kees de Jong they came purposefully for the Edukans director to familiarize with SASOL before the final documents of the merger with Exchange are drawn and finalized. A part from meeting with SASOL staff they met both Mr. Katua and Prof. Mutiso.

With any further AOB the members invited the SASOL staff to appraise the members on the progress made so far in 2006.

Min 17/2006 Staff Progress Reports

SUMMARY

DAMS	COMPLET E	CONSTRUCTIO N	PREPARATIO N	TOTA L	ANNUA L TARGE T
MCC - 3	14	2	-	16	16
SIDA - 4	12	8	-	20	20
MCC - 4	-	-	10	10	10
EXCHANGE	4	4		8	8
INSURANC E	0	0	12	12	12
TOTAL	30	14	22	66	66

NB:

SIDA 4 Project target 50

Number to be achieved 52

WELLS	COMPLET E	CONSTRUCTIO N	PREPA. DIGG	TOTAL	TARGE T
MCC- 3	3	7	0	10	10
MCC- 4	-	-	-	-	-
SIDA –4	15	27		42	42

EXCHANG E	1	4	3	8	8
TOTAL	19	38	3	60	60

Capacity Building

TYPE OF TRAINING	NO	PLACE (SUB-LOCATION)	TARGET
Project Management	2	Ilamba, Utithini	3
Natural Resource	1	Ekani	2
Tree Nursery	1	Kawongo	1
PHAST	0	-	2

THE PERSONNEL

Management

- | | |
|----------------------|--------------------------------------|
| 1. Sam Mutiso | - Manager |
| 2. Joseph Mutinda | - Coordinator – Exchange |
| 3. Julius N. Munyao | - Construction Supervisor |
| 4. Mathew Kitema | - Coordinator Community Organisation |
| 5. Bernard Muendo | - Assistant Construction Supervisor |
| 6. Onesmus Mwangangi | - Assistant Coordinator Exchange |
| 7. Elijah Kamama | - Community Assistant Organisation |
| 8. Mary Maingi | - Administrative Assistant |

Artisans

9. Mutua Tulo
10. Muthami Mwanzaku
11. Ngei Mwoka
12. Mwambu Muema
13. Mulwa Kyusya
14. Boniface Kimanzi
15. Musya Muinde
16. Joseph Kivusyu
17. Kyalo Kimuli
18. Musyoka Kisomo
19. Misheck Mulumba
20. Munyau Kiumo

21. Muthui Mumbé
22. Ngui Mulwa
23. Isaiah Mwendwa
24. Musembi Mulu
25. Mbusya Mutisya
26. Alex Kula
27. Mutinda Komu

Fund Raising

S/NO	TYPE OF PROPOSAL	DONOR	STATUS
1	450	EU//Tana	Reception confirmed
2	50 Dams	WSTF	Accepted by Tana Water board
3	Catchment protection	WSTF	Approved by Tana Water Board
4	Yamwiitu – 6 to 10 dams		Approved
5	Food for work	Kindernolthilife	Not accepted
6	Food for work	MCC	Funded – in progress

Visitors

1. Fourteen visitors from Canadian Food Grain Bank (CFGFB). They visited villages and spend a night at the villages on 16/2/2006.
2. Two water Engineers from Tana Water Board/Auditor
3. Arena film from Heijmans, Exchange, Health and Sanitation and Civil Engineering Students Teachers and Parents.
4. Henk Haring – Director Exchange
5. Staff from Catholic Diocese of Embu Water Department

Constraints And Challenges

1. Drought therefore the water for construction was drawn about 3 Kilometers. The temperatures were high
2. Famine resulting to most able people migrating in search of employment, leaving the weak and old behind.
3. Construction has been delayed due to early rains in March resulting to trenches, being filled with water and mud/silt.

(B) EXCHANGE REPORT BY MUTINDA

State Of Affairs 2006

Teams = 23

Students

Dutch = 66

Kenyan = 40

Disciplines/Sectors = 8

Civil Engineering

Water Quality (Lab Tech)

Pumping

Agriculture

Energy

Trade and marketing

ICT

Hygiene, Sanitation and Nutrition

Progress

CE

CE achieved 7 dams instead of the 8 planned due to budget constraints arising due to unpredictable weather and soil morphology. Since 2003 the low and poor rainfall in the District have caused severe drought and food shortage, which has attracted a lot of concern and intervention. Due to this water and food, supposedly a contribution by the community has been shifted to be covered in the material budgetary item.

Further, by design the dams in Kitui South have proved to be bigger than those built in Yatta and Central. Due to this, average dam cement consumption has gone up from 350 to 420 bags of cement.

However this constraint has been dealt with in the 2007 Budget by increasing the material budgetary item to cover these 3 variables.

Pumping

3 different local modifications of the rope pump have been fabricated since 2004. The 'Kawongo' and Double A pumps are relatively stable. However, the Kawongo Pump has more stability and advantages especially in the use of bicycle freewheel as a stopper against backlash. We plan to extend and test the Kawongo pump in different situations viz communal well, household based well, and irrigation supply well. This is meant to ascertain the effective and efficient situation for the rope pump locally.

WQ

Bacterial, protozoan, and yeast and fungal manifestation have been found in most of the samples taken and tested. The degree of concentration varies depending on the source of supply with scoop holes and open reservoirs recording very high colony numbers. Wells have fewer colonies but closed wells with pumps have comparatively less manifestations.

On chemical pollutants, phosphates, sodium and nitrates have been recorded to be present but the levels are within the acceptable levels except a few cases where nitrates and phosphates expectedly from artificial fertilizers have leaked into the streams.

On mitigation several purification methods are being tried out i.e

Bio sand filters

Halophyte filters

Solar distillatory

Ceramic filters

Hypo chloride

Grunbeck filter

The results are not conclusive

ICT

So far 11 schools have benefited from the computerization programme. A total of 66 computers have been installed. However this programme has been affected by logistical, operational and infrastructural problems. So far the 100 computers, which we expected to be delivered by Exchange through the partnership of Computers for Development and Computers for Schools Kenya, have been delayed due to flawed contractual procedures. 30 were delivered in February 2006 and the remaining 70 will be expected between in October.

Participating schools also are faced by insufficient power supply, lack of ICT room and facilities, lack of ICT teachers and internal administrative and operational problems. Due to these problems we have proposed a more rigid, intensive and quality oriented programme rather than the quantity- extensive approach we have employed so far. We also suggested to Exchange to spend the money used in shipment for purchase of local and high quality PCs in Kenya thus avoiding the shipment complications.

The first phase of the Info Hub is complete with a digital library and Internet in operation. Most of the computers at SASOL are networked and connected to the digital library and Internet. However the use has not been regularized, as the staff will need refresher training for use and operation.

Energy

Energy has been and will ever be the biggest challenge to production and subsequent development. Promotion of cheaper and renewable energy sources will reduce the dependence on fossil fuels. In this line therefore we are in the process of trying out wind, solar, bio fuels, and other energy saving techniques. So far our pilot biogas plant has been a success and we intent to disseminate biogas technology to institutions e.g. schools whose handle large quantities of ablution waste.

Also the Rocket Jiko, a wood energy saving stove has been piloted with very satisfying results and its use in households will be promoted.

Further Jatropa, a source of biodiesel has been introduced and we will monitor its growth with special emphasis on climatic suitability, pests and disease control. It has come to our knowledge that Mr. Isaac Kalua is having a plantation of Jatropa and our students will visit him to gain some insights.

Trade And Marketing

We have ascertained that all the existing Micro Financial Institutions offer credit facilities not commensurate with the existing levels of profit margins. More often than not the interest rates are within the same range as of those charged by commercial banks. In summation the whole range of the credit facilities are designed to exploit the micro businesses for the benefit of the issuing financial institutions.

Heijmans Donations

Besides funding sand dams Heijmans will also fund other community and school related infrastructures. In September 2006 three schools will benefit from this initiative.

Sombe girls – library

St Lukes Yatta Secondary School – ICT Lab complete with power supply

Kanziku Secondary – 46 m cubic Water tank.

Eric Starre Donation

Ekani Primary School Sand dam and 46 M cubic Water tank

Closing Remark

The planning for 2007 is in progress. We expect an increase in activities as compared to 2006.

(C) Emerging Issues by Kitema

1. Self styled C.B.O –MAITO Masaani and ITOMYA 72 members. Started as an umbrella to oversee artisans care, motivating the weak discipline of dams water misusers/non members and protection.
2. Participation of young men and women in sand dam project, but young women overshadow the young ones.
3. Replicability of sand dams is easier than before because the new areas are learning from their neighbours who have constructed

Comments by Board Members

1. Much has been achieved this year
2. Issue of Moringa Olifera

With no further business the chair closed the meeting at 3.10 pm

Signed:

Chairman:.....

Secretary:.....